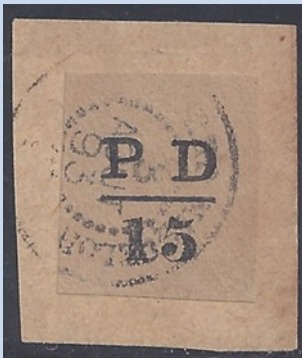


NOTES FROM ILO JIM TAYLOR

Check the exhibition schedules on pages 1 and 2 for updates on FIP World and FIAF Continental philatelic Exhibitions which welcome RPSC Canadian exhibition entries.

THE EXPERT GROUP



A doubtful stamp of St. Pierre & Miquelon submitted to the Philatelic Foundation

[Excerpt from an article written by Tai Peng Hian (RDP) and Lim Sa bee on web page: <http://www.fipfakesforgeries.org/fip/?page_id=188>].

The purpose for the creation of an Expert Group at a FIP exhibition is to check the exhibits for any forged items. The Group members are to verify the existence of authenticated certificates, and to recommend appropriate actions in case forged, faked, repaired and doubtful items are detected. The Expert Group shall consist of a minimum of 3 members

(including the Group Team Leader), preferably each member specializes in or is more well versed with a specific continent's philatelic materials, that is, Europe, America, Asia respectively.

They are to be equipped with a pair of "sharp eyes" being able to see and spot the questionable items which may not be within their scope of specialization. They are to be selected by the Exhibition Management

No. 67 711 April 28, 1978

THE PHILATELIC FOUNDATION
99 PARK AVENUE
NEW YORK, N.Y. 10016
EXPERT COMMITTEE

We have examined the enclosed item submitted by the applicant described as follows:

ST. PIERRE and
Country MIQUELON Issue 1886 Denomination 15c
Color white Cat. No. 14
Brief description or additional information All Catalogue numbers are Scott's unless otherwise specified.

Used.
of which a photograph is attached and are of the opinion
that it is a counterfeit stamp and cancellation.

This certificate on buff safety paper is issued for a "patient" that proves to be other than genuine, i.e. reperforated, regummed, cleaned, faked, bearing fraudulent overprints or postmarks, having thin spots, tears or margin repaired, or an outright counterfeit.

Michael M. ...
For The Expert Committee
Chairman

67-711 "counterfeit stamp and cancellation" signed by the Chairman of the Expert Committee

FIP PATRONAGE EXHIBITS

OPEN FOR ENTRIES

BANDUNG 2017—INDONESIA

3-7 August, 2017

Trans Studio Convention Center

Website : www.bandung2017.org

IREX regulations and Entry Forms now available

"Specialized" FIP Entries are restricted to:

Traditional Philately, Postal History, Postal Stationery, Thematic, Youth Philately, Modern Philately, One Frame Exhibits and Literature classes.

Canadian Commissioner - Jim Taylor FRPSC FRPSL

2335 Paliswood Road SW, Calgary AB

Email: miquelon@shaw.ca DEADLINE November 20, 2016

Phone +1 403 238-3698 [Mountain Time]

BRASILIA 2017 BRAZIL

24-29 October, 2017

Guimaraes Convention Center, Brasilia City

Website : www.stampbrasil2017.net.br

Waiting in IREX regulations and Entry Forms

"Specialized" FIP Entries are restricted to:

Traditional Philately, Postal History, Postal Stationery, Thematic, Literature and Brasilia Championship Classes

Canadian Commissioner Charles J. G. Verge, FRPSC, FRPSL

PO Box 639, U, Toronto, ON M8Z 5Y9

Email: cjgverge@rogers.com

+1 613 851-2770 (cell) +1 647 346-6973 (home) [Eastern Time]

FIAF SPONSORED EXHIBITS

OPEN FOR ENTRIES

EXPO-SPM 2017— ST. PIERRE, ST PIERRE & MIQUELON

June 1-4, 2017

Entry Forms and Regulations Pending

**Webpage: <<http://www.clubphilatelique.com/>>
[under construction]**

Canadian Commissioner: TBA

E-mail for information: Jim Taylor <miquelon@shaw.ca>

BACK ISSUES OF THE INTERNATIONAL EXHIBITOR

<http://www.philatelicspecialistsociety.com/internationalex.shtml>

WEBSITES

FIAF: Federación Interamericana de Filatelia <http://www.f-i-p.ch>

FIP: Fédération Internationale de Philatélie

www.fiaf-filatelia.com/index_english.html

RPSC: Royal Philatelic Society of Canada www.rpsc.org

Contact the Editor: Jim Taylor <miquelon@shaw.ca>

in consultation with the FIP Consultant. The FIP Board is to give the consent and final approval.

The Expert Group is independent of the Jury. For this reason and also to ensure the smooth operation of the Expert Group, the Exhibition Management shall provide a separate compartment or an enclosed cubicle in the Jury Room. The essential equipment to be provided are computer, scanner, colour printer, handy magnifying glass (at best of 15 times magnifying power), an English speaking assistant capable of operating the computer & scanner and a CD or thumb drive to save all the completed scanning work for FIP record.



Unauthorized persons shall not have access or cause any interruption of or interference with the work of the Group. To avoid misunderstanding and unnecessary embarrassments, officials or representatives of any FIP Commissions or persons who are not directly responsible for the functions of the Expert Group shall refrain themselves from interfering while the Expert Group is at work.

All matters pertaining to the Expert Group shall be referred to the Group Team Leader or the Secretary of the Jury.

The Expert Group Team Leader and the FIP Board Director in charge of the Commission for the Fight Against Forgeries shall plan, organize and control all processes of the work of the Expert Group prior to and during the exhibition according to the schedule of Time Table for Jury, Expert Group and National Commissioners.

The Group Team Leader and FIP Board Director in charge of the Commission for the Fight Against Forgeries and the Expert Group Team Leader shall receive the Competitive Exhibits Listing from the Exhibition Management (It is the responsibility of the FIP Consultant to ensure that they receive the Listing 3 solid months prior to the exhibition dates).

The said FIP Board Director shall study the Listing and identify the exhibits which have items that required certificates and items that do not exhibit again (as recommended from the previous exhibitions). He shall then prepare an action list for further inspection containing
name of exhibitor
country of exhibitor
title of exhibits
detailed items in question for certificates, with illustrations sheets attached.

The information should be delivered or sent by email to the Expert Group Team Leader for attention, to reach him at least 5 weeks in advance.

The Expert Group Team Leader will communicate with the respective commissioners (1) to ask for copies of the certificates of the specific items from the exhibitors, preferably to receive by the Group Team Leader before his departure for the Exhibition, (2) to ascertain whether the “items do not exhibit again” has been complied with.

FIP EXHIBITS IN THE PLANNING STAGES

TEL AVIV 2018—Tel Aviv, ISRAEL

April 14-20, 2018
FIP Patronage

PRAGUE 2018—CZECH REPUBLIC

August 15-18 2018, Clarion Congress Hotel, Prague, TR & PH
Specialized: Traditional, Postal History FIP Patronage
Website: PRAGA2018.org [under construction]

AUCKLAND 2018—NEW ZEALAND

November 8-12, 2018
Website: <<http://www.aps.gen.nz.html>>

MALAYSIA 2018 Kuala Lumpur

December
“Specialized” FIP Patronage

CHINA 2019

October-November 2018, Beijing
Provisional Patronage

LONDON 2020—London, United Kingdom
Business Design Centre in Islington, London
Saturday, 2 May 2020 until Saturday, 9 May 2020.
<Website: <http://www.london2020.co/>>

To ensure that as many exhibitors as possible can be accepted, the frames will be used twice during the week with exhibits being swapped on Tuesday 5 May.

BOSTON 2026 United States

May 23-30 Boston Convention Center Westin
Website: <http://www.boston2026.org/>

FIP Exhibitions listed are in the planning stage and are tentative.
Countries, venues and dates are subject to change.
“Specialized” FIP Exhibitions may not offer all Classes.

“Continental” or other International Exhibitions with “FIP Recognition”

CHINA 2016 Nanning / China 02.-06.12 2016
www.nnaise.cn/en/index.html

MELBOURNE 2017 Melbourne / Australia 30.03.-02.04
2017melbourne2017.com.au

FINLANDIA 2017 Tampere / Finland 24.-28.05 2017
www.finlandia2017.fi

The RPSC—Canada may not have invited National Commissioners or Jury Members at Continental Exhibitions outside of the Americas (FIAF)